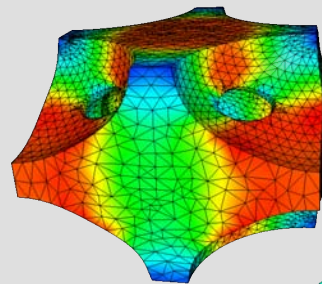
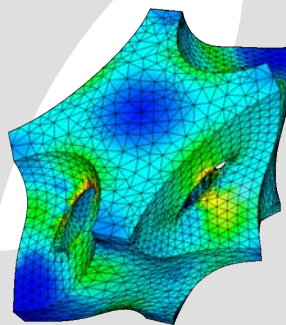
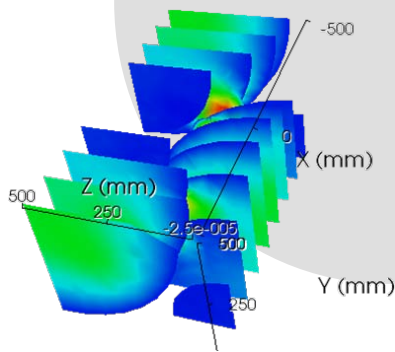
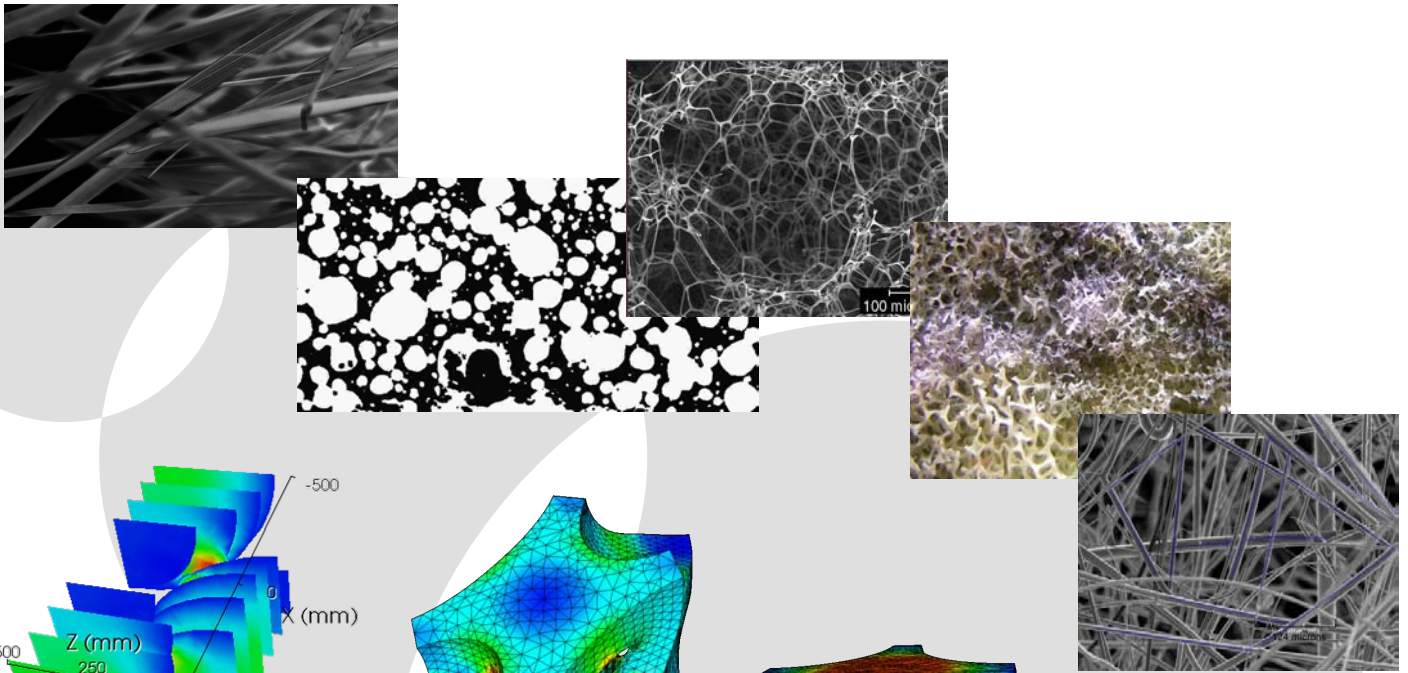


ScalingCell

A unique tool to ease the dialogue between chemists and end-users, prescribers and manufacturers.

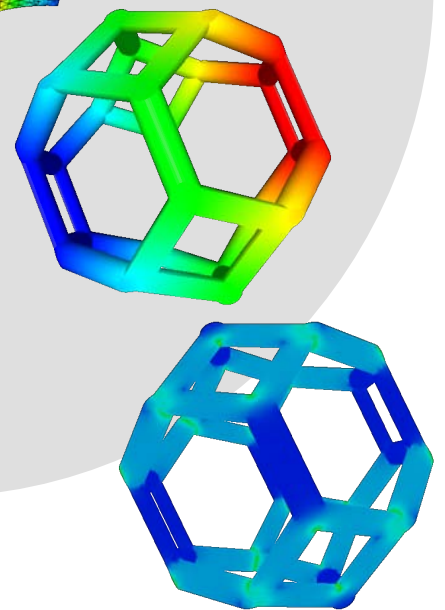


ScalingCell predicts the **macroscopic** properties of porous materials from their **micro-structures**.

ScalingCell provides three types of calculation :

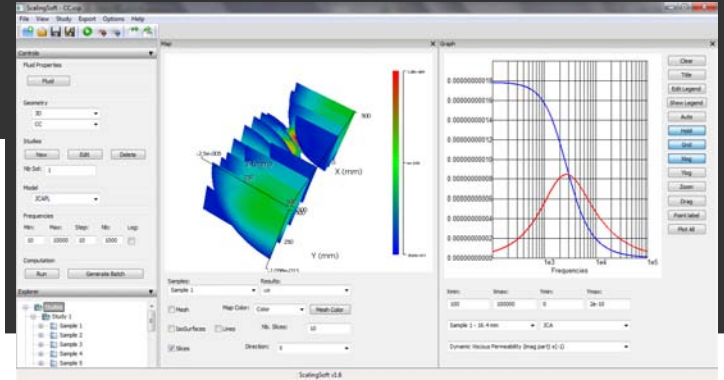
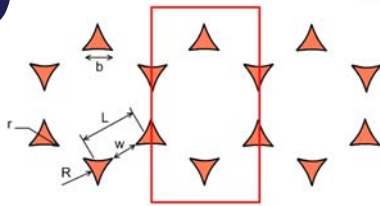
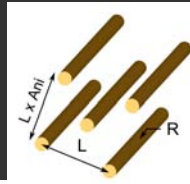
- ACOUSTICAL PROPERTIES
- THERMAL PROPERTIES
- ELASTICAL PROPERTIES

ScalingCell works from predefined geometries or any geometry provided by the user.



Prepare to be MATELYS approved !

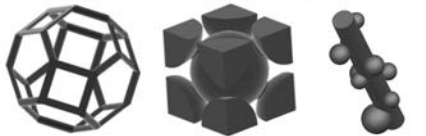
ScalingCell



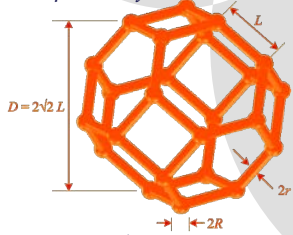
Single input ...

↳ idealised material microstructure

metallic foam



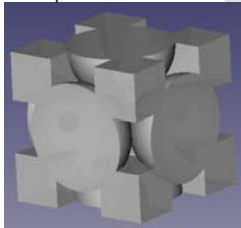
open cell foam



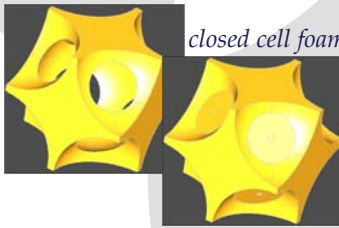
partly reticulated foam



road pavement



closed cell foam



Multiple outputs !

↳ acoustical properties

↳ thermal conductivity

↳ elastic properties

Detailed outputs

ACOUSTICAL PROPERTIES

- sound **absorption**
- **dynamic** properties (hybrid / direct method)
- macroscopic parameters JCA / JCAL / JCAPL (hybrid method)

ELASTICAL PROPERTIES

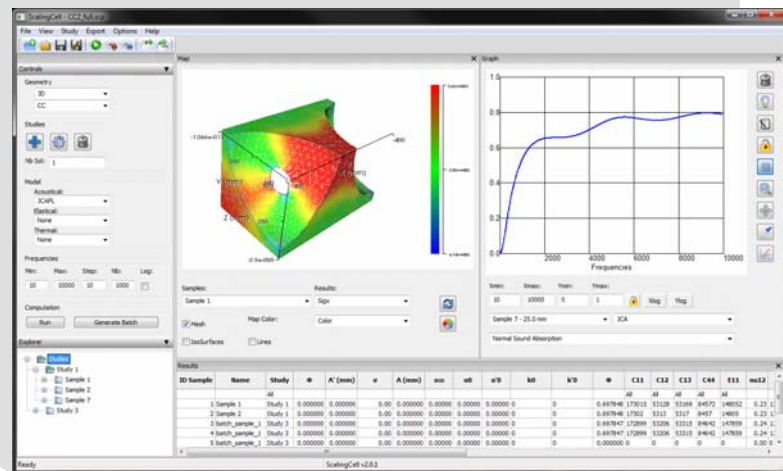
- full **elasticity matrix**

THERMAL PROPERTIES

- material **conductivity**

Key features

- cell **anisotropy**
- ensured **convergence**
- **parametric** study feature
- fully **scriptable**
- field **visualization**
- **STL** import
- direct export to **AlphaCell** to study **multi-layer** materials



ScalingCell runs under
MS-Windows, Linux, Unix, Mac

ScalingCell is a software product
designed and developed
by MATELYS-Research Lab

<http://scalingcell.matelys.com/>
scalingcell@matelys.com

MATELYS - Research Lab
7 rue des Maraîchers, Bât B
F-69120 Vaulx-en-Velin
FRANCE

Phone: +33 972 50 93 16
Fax: +33 972 50 93 15
Email: contact@matelys.com
Web: <http://www.matelys.com/>