

*A complete offer for your characterization lab*

- equipment
- software
- support & maintenance



**For academic and industrial laboratories in :**

- Building industry
- Ground transportation
- Air transportation
- Appliances
- Outdoor materials



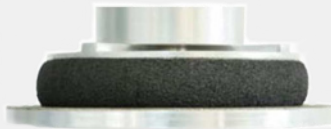
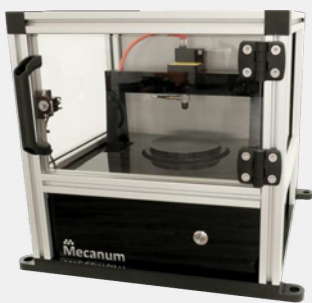
*Prepare to be MATELYS approved !*

*On-shelf or custom ...  
but in any case turnkey test rig !*



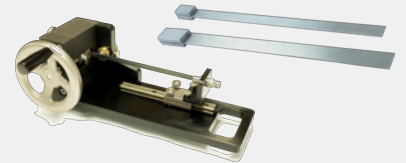
### Impedance tube suite

3, 4 microphone positions, diameter 29 mm, 44.45 mm, 100 mm rings and grids, adapted die cutters, material slicer...  
Compliant ISO 10534-2 & ASTM E1050 & ASTM E2611  
Equipment may be driven  
by Matelys software suite :



### Elastic and damping properties

**QMA** quasi-static method, determination of Young's modulus, loss factor and Poisson's ratio  
Compliant ISO 18437-5  
**ETA** Oberst beam method  
compliant ASTM E756-05C



### Air flow properties

**SIGMA** static air flow resistivity, direct or regression method  
Compliant ISO 9053 & ASTM C522-03  
**FPS** fabric and textile permeability, high pressure drop  
Compliant ISO 9237



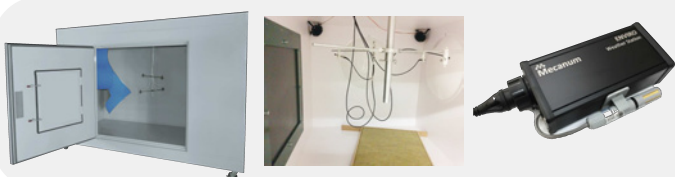
### Open porosity

**PHI** Open porosity and mass density, semi-automated procedure, two gaz technique, Pressure-Mass method



### Tortuosity

**TOR** High frequency limit of tortuosity and equivalent lengths of porous material, option with two gaz



### Alpha- & Beta- Cabin

**ALPHA** absorption in small reverant room  
**BETA** sound transmission loss for small size samples